

S · K · C
corporate
images



S · K · C

corporate images

CORPORATE CATALOGUE

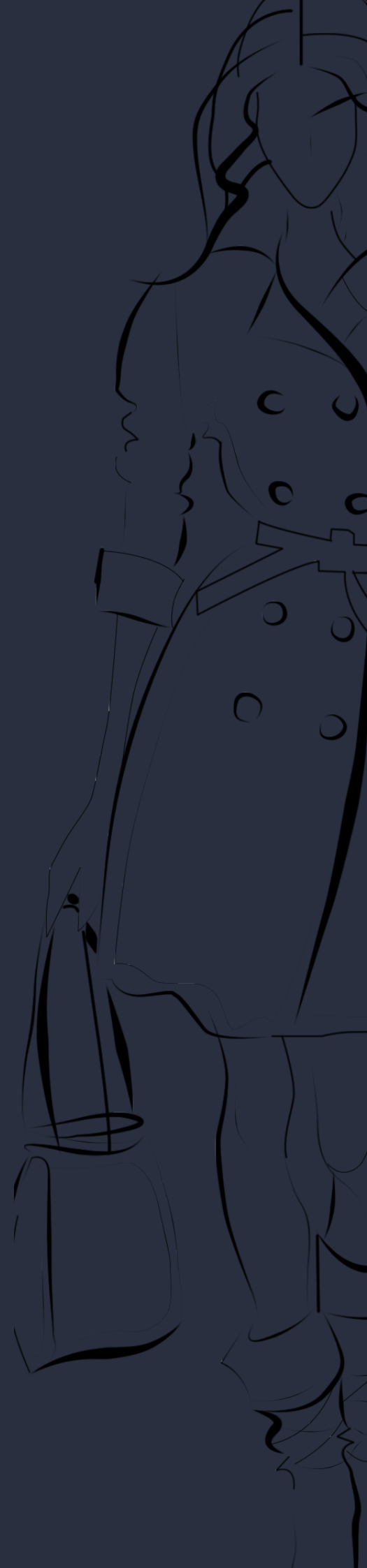
SKC Corporate Images is a leading clothing manufacturer in both ladies and men's corporate wear. We are proud to be a South African operation and take great pride in our ability to not only supply our clients with our standard range but also to custom design uniforms and fabric to suit their specific needs. Our operation is fully BEE compliant with a level 4 rating.

Our fabrics are sourced from local suppliers wherever possible, and are carefully selected to ensure optimum comfort and functionality. Our styling ensures we are able to cater for a variety of tastes, shapes and fashion preferences while keeping a professional look.

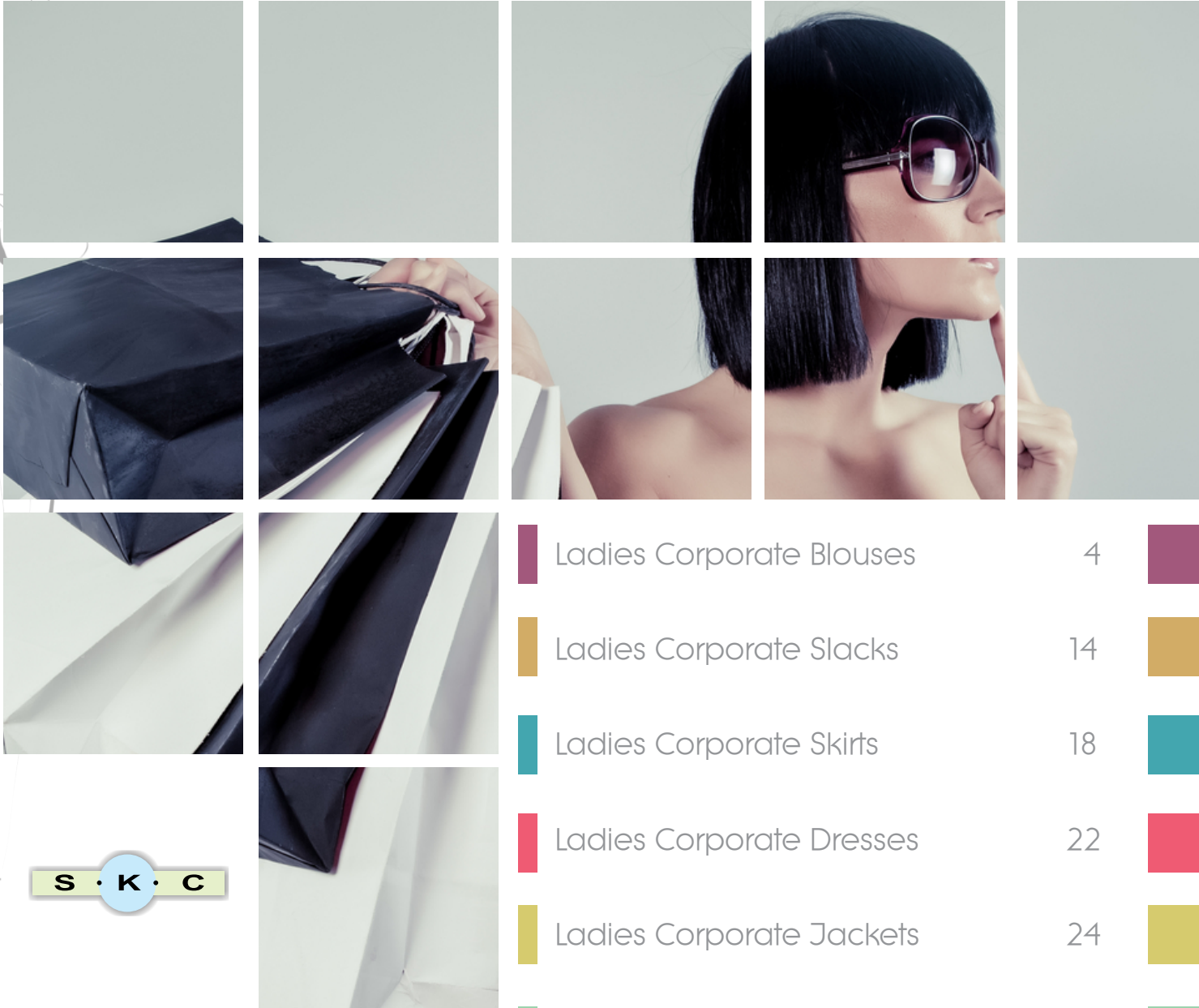
We offer a personalized fitting service at your premises, ensuring your staff can fit the correct size garment. The order can then be processed with as little inconvenience to your business as possible.

All deliveries are individually packaged to ensure ease of distribution for our customers. Delivery is 4-6 weeks from order date.

















Efficient and friendly client service is our utmost priority and our friendly staff are always only a phone call away.



INDEX

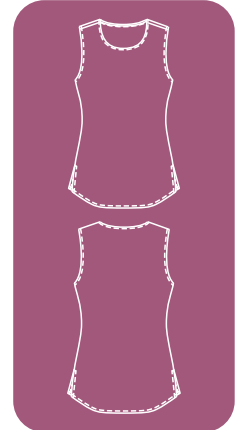


S · K · C

	Ladies Corporate Blouses	4	
	Ladies Corporate Slacks	14	
	Ladies Corporate Skirts	18	
	Ladies Corporate Dresses	22	
	Ladies Corporate Jackets	24	
	Knitwear	28	
	Men's Corporate Wear	30	
	Medical and Beauty Uniforms	38	

Cammi Blouse

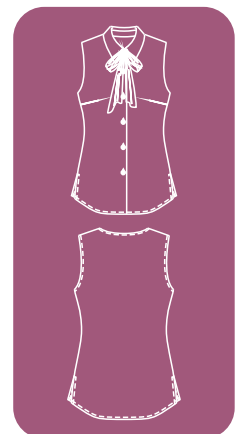
The Cammi top is a basic essential that can be worn alone or under a blouse. Feel cool and confident in this corporate must-have!



- FABRIC:** Crinkle polyester viscose
FEATURES: Extended length - side slits for ease of movement - RELAXED FIT to compliment all body shapes.
COLOURS: Black, Navy, White
SIZES: 32, 34, 36, 38, 40, 42, 44, 46, 48, 50

Reflwe Blouse

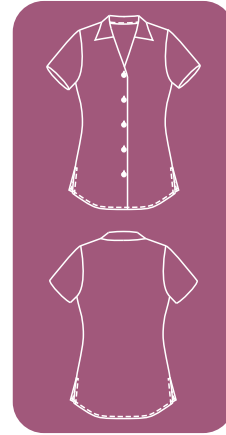
The Reflwe blouse has been specifically designed with femininity in mind. Sleeveless.



- FABRIC:** Koshiho
FEATURES: Feminine removable neck tie - bust darts - sleeveless - slits on the sides - RELAXED FIT to compliment all body shapes - wash and wear fabric.
COLOURS: Black, Red, Camel, Sky, Navy, Lavender
SIZES: 28, 30, 32, 34, 36, 38, 40, 42, 44, 46, 48, 50, 52, 54

Louise Blouse

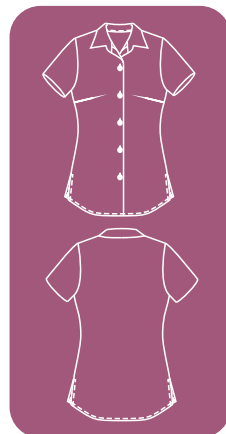
The Louise blouse is a great easy to wear garment with a feminine neckline that suits any working wardrobe and looks classy. Short sleeves.



FABRIC: Koshiho
FEATURES: Feminine neckline - short sleeves - slits on the sides - RELAXED FIT to compliment all body shapes - wash and wear fabric.
COLOURS: Black, Red, Camel, Sky, Navy, Lavender
SIZES: 28, 30, 32, 34, 36, 38, 40, 42, 44, 46, 48, 50, 52, 54

Bokang Blouse

The Bokang blouse is a great easy to wear garment that suits any working wardrobe and looks classy. Short sleeves.

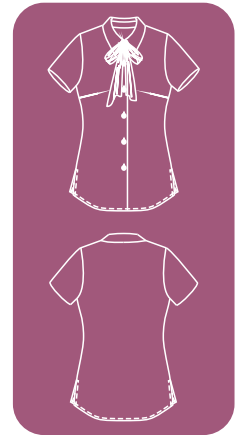


FABRIC: Koshiho
FEATURES: Bust darts - short sleeves - slits on the sides - RELAXED FIT to compliment all body shapes - wash and wear fabric.
COLOURS: Black, Red, Camel, Sky, Navy, White, Lavender
SIZES: 28, 30, 32, 34, 36, 38, 40, 42, 44, 46, 48, 50, 52, 54



Megan Blouse

The Megan blouse has been specifically designed with femininity in mind. Short sleeves.



FABRIC:	Koshibo
FEATURES:	Feminine removable neck tie - bust darts - short sleeve - slits on the sides - RELAXED FIT to compliment all body shapes - wash and wear fabric.
COLOURS:	Black, Red, Camel, Sky, Navy, Lavender
SIZES:	28, 30, 32, 34, 36, 38, 40, 42, 44, 46, 48, 50, 52, 54

Ladies short sleeve New Yorker Blouse

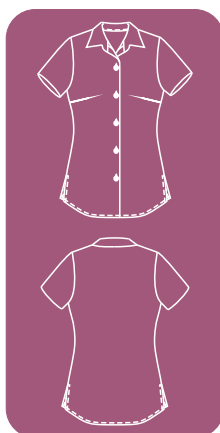
The short sleeve New Yorker blouse is great, easy to wear garment that suits any working wardrobe and is ideal for creating a unified corporate look by combining it with the men's New Yorker shirt.



FABRIC:	Yarn-dye
FEATURES:	Bust darts - short sleeves - slits on the sides - RELAXED FIT to compliment all body shapes - matching men's range.
COLOURS:	Blue and White Stripe, Grey and White Stripe
SIZES:	28, 30, 32, 34, 36, 38, 40, 42, 44, 46, 48, 50, 52, 54

Ladies short sleeve Pago Blouse

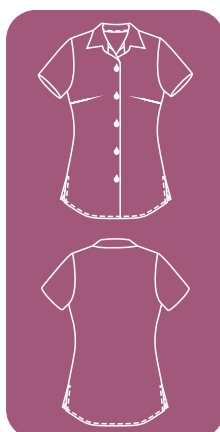
The short sleeve Pago blouse is a great, easy to wear garment that suits any working wardrobe and is ideal for creating a unified corporate look by combining it with the men's Pago shirt.



FABRIC: Yarn-dye
FEATURES: Bust darts - short sleeves - slits on the sides - RELAXED FIT to compliment all body shapes - matching men's range.
COLOURS: Blue and White Stripe
SIZES: 28, 30, 32, 34, 36, 38, 40, 42, 44, 46, 48, 50, 52, 54

Ladies three-quarter Pago Blouse

The three-quarter Pago blouse celebrates the female form with front and back darts and curved waistline, and is ideal for creating a unified corporate look by combining it with the men's Pago shirts. Three-quarter sleeves.



FABRIC: Yarn-dye
FEATURES: Front and back darts - three-quarter sleeves - CLASSIC FIT is more tailored without being too fitted - matching men's range.
COLOURS: Blue stripe
SIZES: 28, 30, 32, 34, 36, 38, 40, 42, 44, 46, 48, 50, 52, 54

Ladies three-quarter Kingston Blouse

The three-quarter Kingston blouse celebrates the female form with front and back darts and curved waistline, and is ideal for creating a unified corporate look by combining it with the men's Kingston shirts. Three-quarter sleeves.

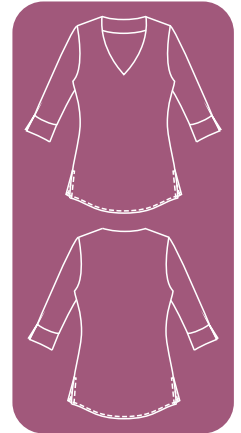


FABRIC: Yarn-dye
FEATURES: Front and back darts - three-quarter sleeves - CLASSIC FIT is more tailored without being too fitted - matching men's range.
COLOURS: Blue Check
SIZES: 28, 30, 32, 34, 36, 38, 40, 42, 44, 46, 48, 50, 52, 54



Michelle Blouse

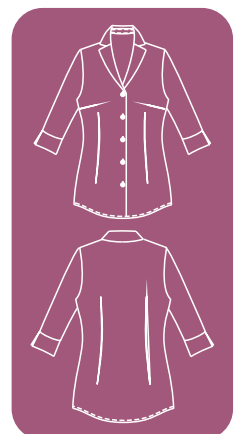
The Michelle blouse is a great easy to wear garment, V-neck with slits on the sides. Three-quarter sleeves.



- FABRIC:** Koshiho
FEATURES: V-neck - three-quarter sleeve - slits for ease of movement - RELAXED FIT to compliment all body shapes - wash and wear fabric.
COLOURS: Black, Red, Camel, Sky, Navy, Lavender
SIZES: 28, 30, 32, 34, 36, 38, 40, 42, 44, 46, 48, 50, 52, 54

Jane Blouse

The Jane blouse celebrates the female form with its soft fabric, front and back darts and curved waist-line. Three quarter sleeves.



- FABRIC:** Koshiho
FEATURES: Front and back darts - three-quarter sleeves - CLASSIC FIT is more tailored without being too fitted - wash and wear fabric.
COLOURS: Black, Red, Camel, Sky, Navy, Lavender
SIZES: 28, 30, 32, 34, 36, 38, 40, 42, 44, 46, 48, 50, 52, 54

Ladies three-quarter Sydney Blouse

The three-quarter Sydney blouse celebrates the female form with front and back darts and curved waistline, and is ideal for creating a unified corporate look by combining it with the men's Sydney shirts. Three quarter sleeves.



- FABRIC:** Yarn-dye
FEATURES: Front and back darts - three-quarter sleeves - CLASSIC FIT is more tailored without being too fitted - matching men's range.
COLOURS: Black and White Stripe, Blue and White Stripe
SIZES: 28, 30, 32, 34, 36, 38, 40, 42, 44, 46, 48, 50, 52, 54

Ladies three-quarter New Yorker Blouse

The three-quarter New Yorker blouse celebrates the female form with front and back darts and curved waistline, and is ideal for creating a unified corporate look by combining it with the men's New Yorker shirts. Three quarter sleeves.



- FABRIC:** Yarn-dye
FEATURES: Front and back darts - three-quarter sleeves - CLASSIC FIT is more tailored without being too fitted - matching men's range.
COLOURS: Blue and White Stripe, Grey and White Stripe
SIZES: 28, 30, 32, 34, 36, 38, 40, 42, 44, 46, 48, 50, 52, 54



Ladies three-quarter Delhi Blouse

The three-quarter Delhi blouse celebrates the female form with front and back darts and curved waistline, and is ideal for creating a unified corporate look by combining it with the men's Delhi shirts. Three-quarter sleeves.



- FABRIC:** Yarn-dye
FEATURES: Front and back darts
 - three-quarter sleeves -
 CLASSIC FIT is more tailored without being too fitted - matching men's range.
COLOURS: Olive Green Strip
SIZES: 28, 30, 32, 34, 36, 38, 40, 42, 44, 46, 48, 50, 52, 54

Ladies three-quarter Texas Blouse

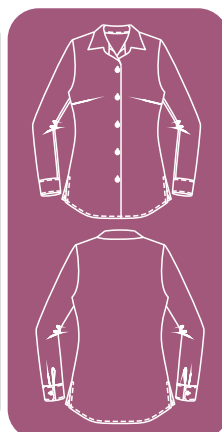
The three-quarter Texas blouse celebrates the female form with front and back darts and curved waistline, and is ideal for creating a unified corporate look by combining it with the men's Texas shirts. Three-quarter sleeves.



- FABRIC:** Yarn-dye
FEATURES: Front and back darts
 three-quarter sleeves
 CLASSIC FIT is more tailored without being too fitted - matching men's range.
COLOURS: Stone Check
SIZES: 28, 30, 32, 34, 36, 38, 40, 42, 44, 46, 48, 50, 52, 54

Ladies long sleeve Pago Blouse

The long sleeve Pago blouse is a great, easy to wear garment that suits any working wardrobe and is ideal for creating a unified corporate look by combining it with the men's Pago shirts.



- FABRIC:** Yarn-dye
FEATURES: Bust darts - long sleeves - slits on the sides - RELAXED FIT to compliment all body shapes - matching men's range.
COLOURS: Blue and White Stripe
SIZES: 28, 30, 32, 34, 36, 38, 40, 42, 44, 46, 48, 50, 52, 54

Atlegang Blouse

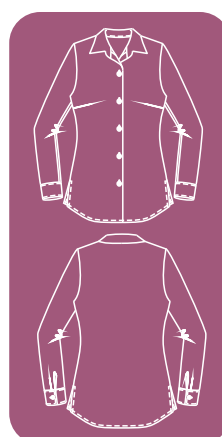
The Atlegang blouse has been specifically designed with femininity in mind. Long sleeves.



- FABRIC:** Koshibo
FEATURES: Feminine removable neck tie - bust darts - long sleeve - slits on the sides - RELAXED FIT to compliment all body shapes - wash and wear fabric.
COLOURS: Black, Red, Camel, Sky, Navy, Lavender
SIZES: 28, 30, 32, 34, 36, 38, 40, 42, 44, 46, 48, 50, 52, 54

Itumuleng Blouse

The Itumuleng blouse is a great, easy to wear garment that suits any working wardrobe and looks classy. Long sleeves.

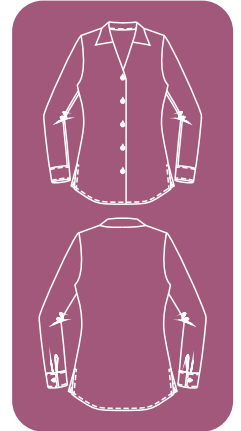


- FABRIC:** Koshibo
FEATURES: Bust darts - long sleeves - slits on the sides - RELAXED FIT to compliment all body shapes - wash and wear fabric.
COLOURS: Black, Red, Camel, Sky, Navy, White, Lavender
SIZES: 28, 30, 32, 34, 36, 38, 40, 42, 44, 46, 48, 50, 52, 54



Palesa Blouse

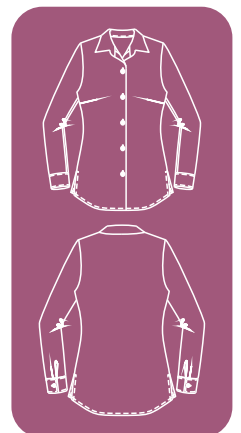
The Palesa blouse is a great, easy to wear garment with a feminine neckline that suits any working wardrobe and looks classy. Long sleeves.



- FABRIC:** Koshiho
FEATURES: Feminine neckline - long sleeves - slits on the sides - RELAXED FIT to compliment all body shapes - wash and wear fabric.
COLOURS: Black, Red, Camel, Sky, Navy, Lavender
SIZES: 28, 30, 32, 34, 36, 38, 40, 42, 44, 46, 48, 50, 52, 54

Ladies long sleeve New Yorker Blouse

The long sleeve New Yorker blouse is a great, easy to wear garment that suits any working wardrobe and is ideal for creating a unified corporate look by combining it with the men's New Yorker shirts.

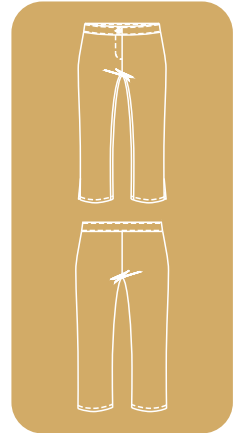


- FABRIC:** Yarn-dye
FEATURES: Bust darts - long sleeves - slits on the sides - RELAXED FIT to compliment all body shapes - matching men's range.
COLOURS: Blue and White Stripe, Grey and White Stripe
SIZES: 28, 30, 32, 34, 36, 38, 40, 42, 44, 46, 48, 50, 52, 54



Diana Slacks

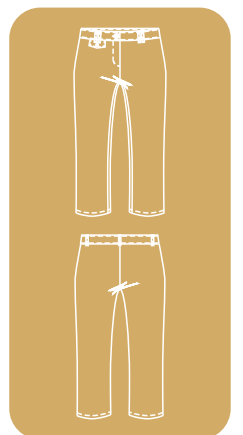
The Diana is a trendy Capri ideal for a practical working wardrobe.



FABRIC: Polyester/Spandex/Rayon Bengaline
FEATURES: Full waistband with one button - three-quarter length - slits on side - wash and wear.
COLOURS: Black, Navy, Stone
SIZES: 30, 32, 34, 36, 38, 40, 42, 44, 46

Abigail Slacks

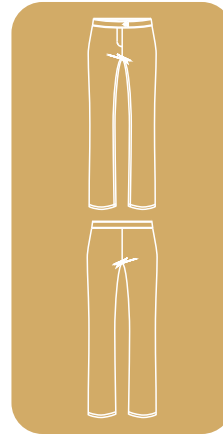
The Abigail is an elegant Capri for the working wardrobe. A full waistband, belt loops with mock front pocket and top stitching detail on waist band are ideal for a flattering fit.



FABRIC: Polyester/Viscose/Spandex
FEATURES: Full waistband with one button and top-stitching detail - three-quarter leg length - mock front pocket - wash and wear.
COLOURS: Black, Navy, Mocha
SIZES: 30, 32, 34, 36, 38, 40, 42, 44, 46

Emily Slacks

The Emily is a classic fit pants, wide waistband with one button.

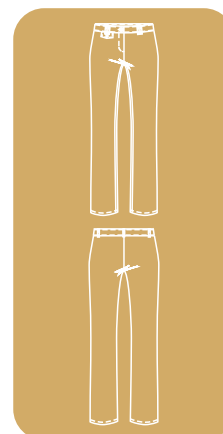


FABRIC: 100% polyester Mini-mat
FEATURES: Full waistband with one button - straight leg - wash and wear.
COLOURS: Black, Navy
SIZES: 30, 32, 34, 36, 38, 40, 42, 44, 46

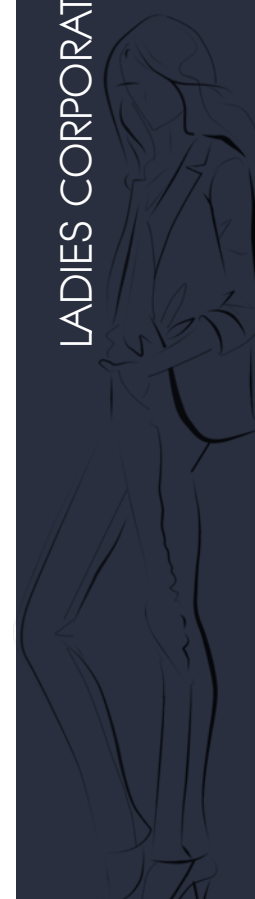


Bontle Slacks

The Bontle is an elegant, straight cut pants. A full waistband, belt loops with mock front pocket and top stitching detail on waist band are ideal for a flattering fit.

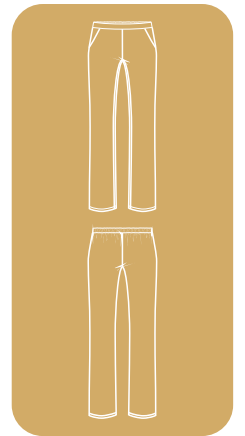


FABRIC: Polyester/Viscose/Spandex
FEATURES: Full waistband with one button and top-stitching detail - straight cut - mock front pocket - wash and wear.
COLOURS: Black, Navy, Mocha
SIZES: 30, 32, 34, 36, 38, 40, 42, 44, 46



Bonny Slacks

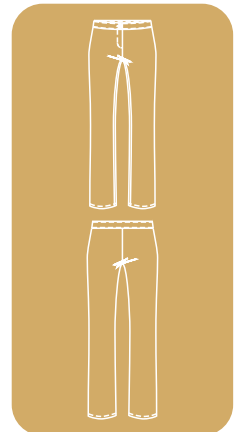
The Bonny has a semi-elasticated waist and side pockets for a professional, comfortable style.



FABRIC: Polyester/Viscose/Spandex
FEATURES: Narrow waistband - back elasticated waist - side pockets - wash and wear.
COLOURS: Black, Navy, Slate
SIZES: 30, 32, 34, 36, 38, 40, 42, 44, 46

Tumelo Slacks

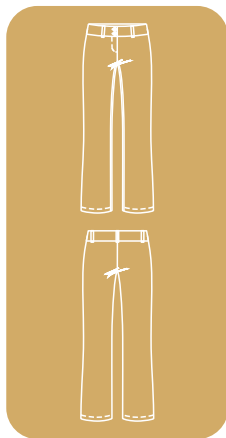
The Tumelo is a classic styled, feminine wide leg, semi-formal pants ideal for a practical working wardrobe.



FABRIC: Polyester/Spandex/Rayon Bengaline
FEATURES: Full waistband with one button - feminine wide leg - wash and wear.
COLOURS: Black, Navy, Stone
SIZES: 30, 32, 34, 36, 38, 40, 42, 44, 46

Kelly Slacks

The Kelly pants are the epitome of slick style. A full waistband, belt loop, low fit and bootleg flare are ideal for a corporate, yet chic finish.

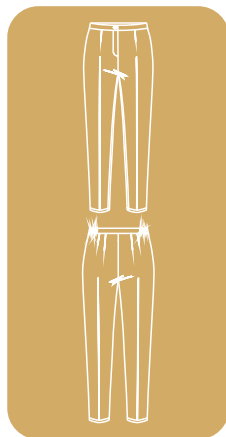


- FABRIC:** Superior quality 100% polyester
- FEATURES:** Full waistband with two buttons and zip - bootleg - superior quality fabric with wash and wear properties.
- COLOURS:** Black
- SIZES:** 26, 28, 30, 32, 34, 36, 38, 40, 42, 44, 46, 48, 50, 52, 54



Teri Slacks

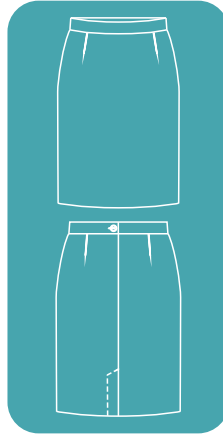
The Teri pants has a semi-elasticated waist, high waist and slightly tapered leg, ideal for a professional look.



- FABRIC:** Superior quality 100% polyester
- FEATURES:** Narrow waist band with elastic on sides - superior quality fabric with wash and wear properties.
- COLOURS:** Black
- SIZES:** 30, 32, 34, 36, 38, 40, 42, 44, 46, 48

Pamela Skirt

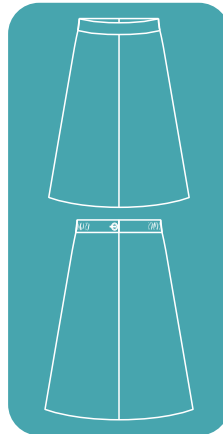
The Pamela skirt is the epitome of slick style. A well-tailored, classic, 60cm, fully lined pencil skirt.



- FABRIC:** Superior quality 100% polyester
- FEATURES:** 60cm - vent for ease of movement - darts in the front and back - Fully concealed zip - lined - superior quality fabric with wash and wear properties.
- COLOURS:** Black
- SIZES:** 26, 28, 30, 32, 34, 36, 38, 40, 42, 44, 46, 48, 50, 52, 54

Cara Skirt

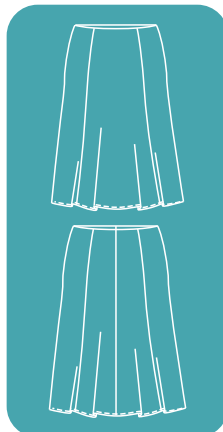
The Cara with a 75cm length is ideal for knee coverage and the A-line provides great movement while retaining a professional corporate look. Fully lined.



- FABRIC:** Superior quality 100% polyester
- FEATURES:** 75cm - A-line - Concealed zip lined - superior quality fabric with wash and wear properties.
- COLOURS:** Black
- SIZES:** 26, 28, 30, 32, 34, 36, 38, 40, 42, 44, 46, 48, 50, 52, 54

Tammy Skirt

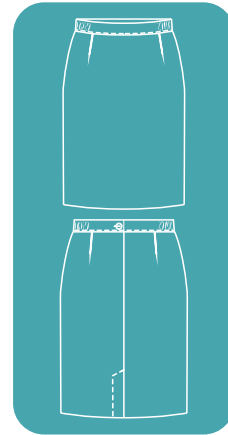
The Tammy is an elegantly flared skirt seven panel. 65cm unlined.



- FABRIC:** Polyester/Viscose/Spandex
- FEATURES:** 65cm - seven panels flared - concealed zip - unlined - wash and wear.
- COLOURS:** Black
- SIZES:** 30, 32, 34, 36, 38, 40, 42, 44, 46

Florence Skirt

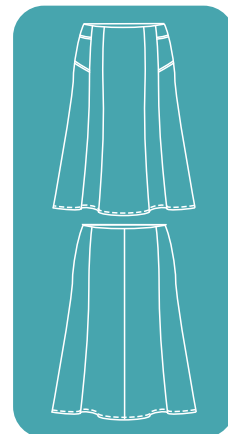
The Florence is designed to compliment the female form with through a semi-elasticated waist. 65cm.



- FABRIC:** Polyester/Viscose/Spandex
FEATURES: 65cm - vent for ease of movement - darts in the front and back - concealed zip - semi-elasticated waistband - unlined - wash and wear properties.
COLOURS: Black, Navy, Mocha, Slate
SIZES: 30, 32, 34, 36, 38, 40, 42, 44, 46

Gail Skirt

The Gail skirt is elegantly flared with feminine detail. 73cm.

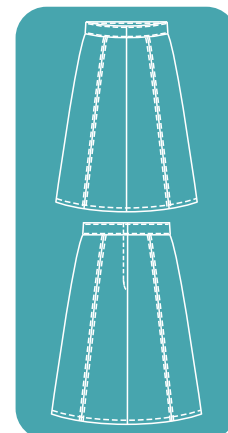


- FABRIC:** Polyester/Viscose/Spandex
FEATURES: 72cm - nine panels flared - feminine detail - concealed zip - unlined - wash and wear.
COLOURS: Black, Navy
SIZES: 30, 32, 34, 36, 38, 40, 42, 44, 46



Dintle Skirt

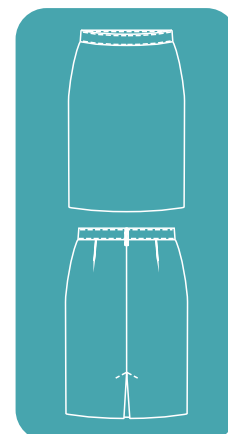
The Dintle is a six panel A-line skirt with top stitch detail and wide waistband. 70cm.



FABRIC: Polyester/Spandex/Rayon Bengaline
FEATURES: 70cm - A-line - concealed zip - unlined - top stitch detail - wash and wear properties.
COLOURS: Black, Navy
SIZES: 28, 30, 32, 34, 36, 38, 40, 42, 44, 46

Ayanda Skirt

The Ayanda is a classic pencil skirt, low cut with box pleat at the back, front darts. 62cm.

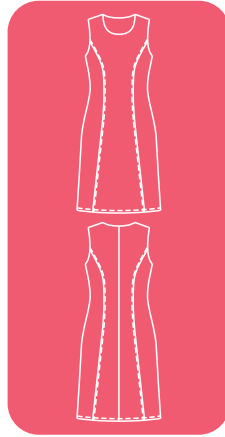


FABRIC: 100% polyester Mini-mat
FEATURES: 62cm - box pleat for ease of movement - back darts - concealed zip - unlined - wash and wear properties.
COLOURS: Black, Navy
SIZES: 28, 30, 32, 34, 36, 38, 40, 42, 44, 46



Katlego Dress

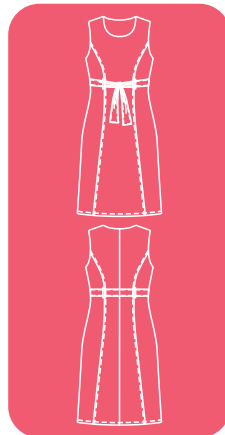
The Katlego dress is a must have classic shift dress for any corporate wardrobe. Fully lined.



FABRIC: Polyester/Viscose/Spandex
FEATURES: Sleeveless - Princess style line - Fully lined - Slit at back for ease of movement.
COLOURS: Black
SIZES: 34, 36, 38, 40, 42, 44

Amanda Dress

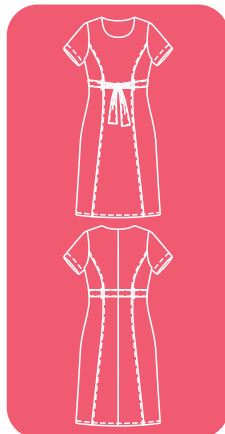
The Amanda is a classic shift with a fashionable belt detail. Unlined.



FABRIC: Polyester/Viscose/Spandex
FEATURES: Sleeveless - Princess style line - Unlined lined - Slit at back for ease of movement.
COLOURS: Black
SIZES: 30, 32, 34, 36, 38, 40, 42, 44, 46

Audrey Dress

The Audrey is a classic short sleeve shift with a fashionable belt detail. Unlined.



FABRIC: Polyester/Viscose/Spandex
FEATURES: Short sleeve - Princess style line - Unlined lined - Slit at back for ease of movement.
COLOURS: Black, Navy
SIZES: 30, 32, 34, 36, 38, 40, 42, 44, 46



Claudia

The Claudia coat is the epitome of slick style with its longer length, clean neckline and fully lined and jetted pockets.



- FABRIC:** Superior quality 100% polyester
- FEATURES:** Longer length - shaped raised neckline - one button - jetted pockets - fully lined.
- COLOURS:** Black
- SIZES:** 26, 28, 30, 32, 34, 36, 38, 40, 42, 44, 46, 48, 50, 52, 54

Tiffany

The Tiffany is the ultimate jacket for the corporate wardrobe with its princess style line, jetted pockets and classic fit. Fully lined.



- FABRIC:** Superior quality 100% polyester
- FEATURES:** One button - flap jet pockets - centre back slit - fully lined.
- COLOURS:** Black
- SIZES:** 26, 28, 30, 32, 34, 36, 38, 40, 42, 44, 46, 48, 50, 52, 54

Nikita

The Nikita is a two button classic blazer style jacket. Ergonomically lined corporate jacket. Short sleeve.



- FABRIC:** Polyester/Viscose/Spandex
- FEATURES:** Short sleeve - two button - mock pockets - centre back slit - ergonomically lined.
- COLOURS:** Black
- SIZES:** 30, 32, 34, 36, 38, 40, 42, 44, 46

Mball

The Mball is a two button classic blazer style jacket. Fully lined corporate jacket.

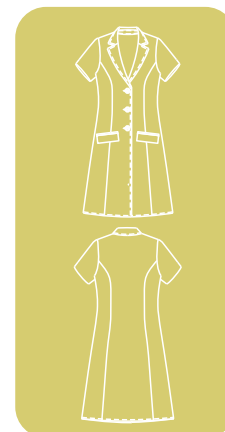


FABRIC: Polyester/Viscose/Spandex
FEATURES: Two buttons - mock pockets - centre back slit - Fully lined
COLOURS: Black, Navy, Slate
SIZES: 30, 32, 34, 36, 38, 40, 42, 44, 46

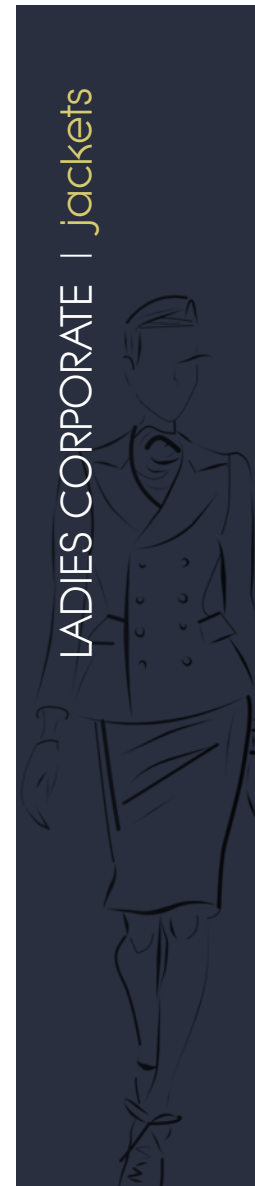


Olivia

The Olivia is a three button longer length, ergonomically lined corporate jacket. Short sleeve.

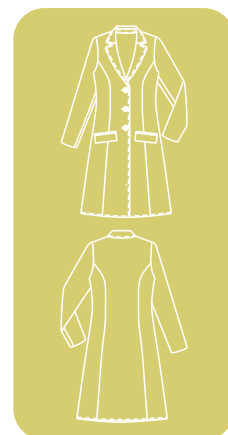


FABRIC: Polyester/Viscose/Spandex
FEATURES: Short sleeves - three button - mock pockets - ergonomically lined.
COLOURS: Black, Navy
SIZES: 30, 32, 34, 36, 38, 40, 42, 44, 46



Nandi

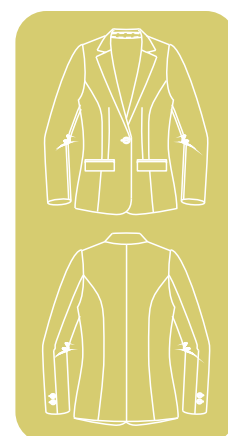
The Nandi is a three button longer length, fully lined corporate jacket.



FABRIC: Polyester/Viscose/Spandex
FEATURES: Three buttons - mock pockets - fully lined.
COLOURS: Black, Mocha
SIZES: 30, 32, 34, 36, 38, 40, 42, 44, 46

Thembi

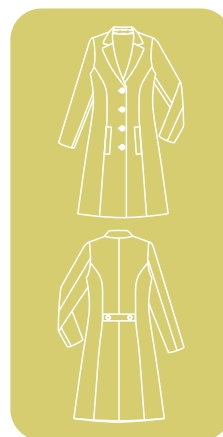
The Thembi is a one button classic blazer style jacket, ergonomically lined corporate jacket.



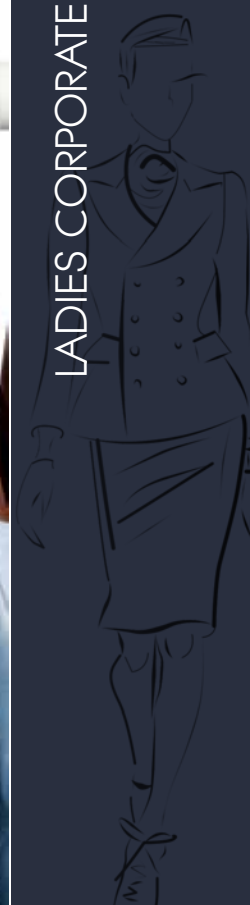
FABRIC: 100% polyester mini-mat
FEATURES: One button - mock pockets - ergonomically lined.
COLOURS: Black, Navy
SIZES: 30, 32, 34, 36, 38, 40, 42, 44, 46

Mokgadi

The Mokgadi coat is ideal for a winter's corporate wardrobe. Melton, fully lined.



FABRIC: Melton
FEATURES: Princess line - three buttons - fully lined.
COLOURS: Black, Navy
SIZES: 26, 28, 30, 32, 34, 36, 38, 40, 42, 44, 46, 48, 50, 52, 54



Jersey

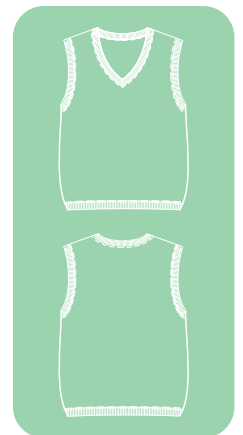
Stylish basic unisex jersey.



FABRIC: Polywool
FEATURES: 10 gauge - long sleeve - V-neck.
COLOURS: Black, Navy
SIZES: S, M, L, XL, 2XL, 3XL, 4XL, 5XL

Pull-over

Stylish basic unisex jersey.



FABRIC: Polywool
FEATURES: 10 gauge - sleeveless - V-neck.
COLOURS: Black, Navy
SIZES: S, M, L, XL, 2XL, 3XL, 4XL, 5XL

Cardigan

Classy cardigan.



FABRIC: Polywool
FEATURES: 10 gauge - long sleeve - front button closure.
COLOURS: Black, Navy
SIZES: S, M, L, XL, 2XL, 3XL, 4XL, 5XL



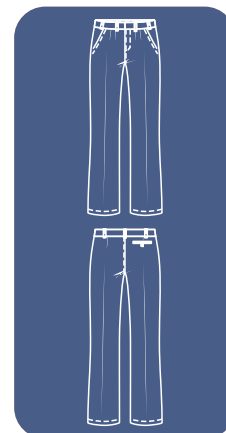
KNITWEAR



All Products are made to order with a manufacturing time of 4-6 weeks for standard products

Chino

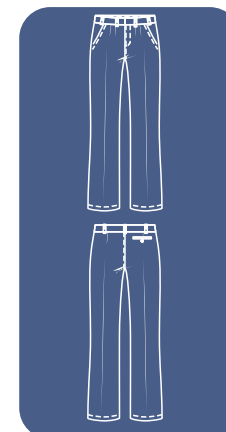
The Chino is a classic, hard wearing corporate trouser.



FABRIC: Polyester/Cotton
FEATURES: Front pleats - hard wearing fabric.
COLOURS: Navy, Black, Stone, Khaki
SIZES: 28, 30, 32, 34, 36, 38, 40, 42, 44, 46

Trousers

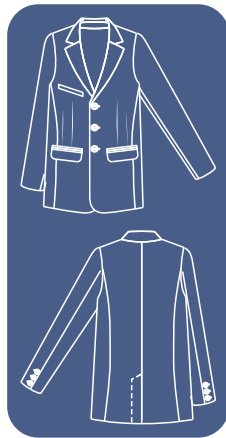
Classic poly-viscose men's pleated trousers.



FABRIC: Polyester/Viscose
FEATURES: Two pleats - two side pockets - hip pocket and front small change pocket.
COLOURS: Navy, Black, Grey, Stone
SIZES: 32, 34, 36, 38, 40, 42, 44, 46, 48, 50

Men's suit

Classic men's suit with two or three button closure.

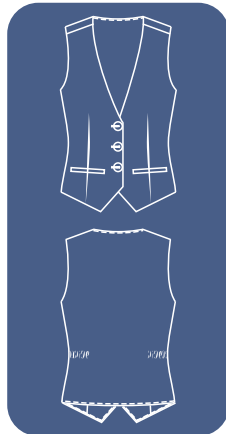


FABRIC: SQ
FEATURES: SQ
COLOURS: SQ
SIZES: SQ



Classic Waistcoat

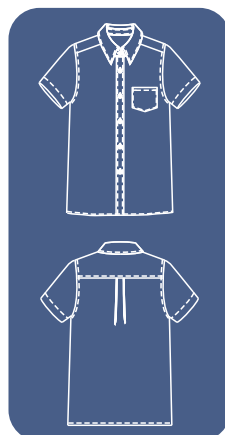
Men's classic waist coat.



FABRIC: Polyester/Viscose
FEATURES: Two front welt pockets -
4 buttons.
COLOURS: Black
SIZES: S, M, L, XL, 2XL, 3XL, 4XL, 5XL

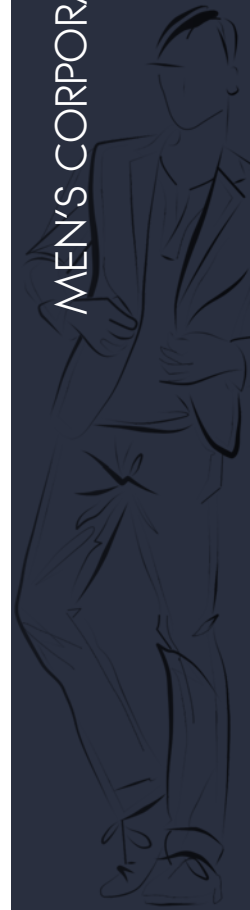
Delhi Shirt

Classic fit men's shirt short sleeve.



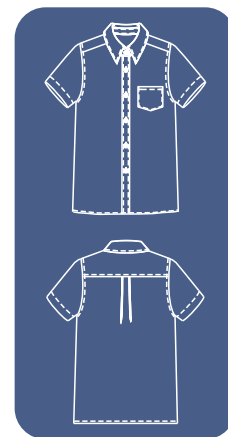
FABRIC: Polyester/Cotton -
Yarndye
FEATURES: Short sleeve - classic
fit - double yolk -
reinforced collar.
COLOURS: Olive Green Stripe
SIZES: 36, 38, 40, 42, 44,
46, 48, 50, 52, 54

MEN'S CORPORATE WEAR



Men's short sleeve New Yorker Shirt

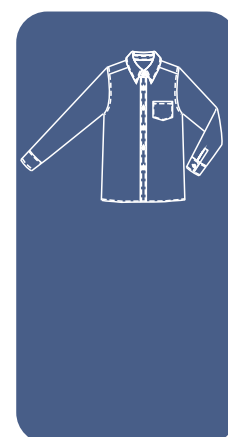
Classic fit men's shirt short sleeve.



FABRIC: Polyester/Cotton - Yarn dye
FEATURES: Short sleeve - classic fit - double yolk - reinforced collar.
COLOURS: Blue and White Stripe, Grey and White Stripe
SIZES: 36, 38, 40, 42, 44, 46, 48, 50, 52, 54

Men's long sleeve New Yorker Shirt

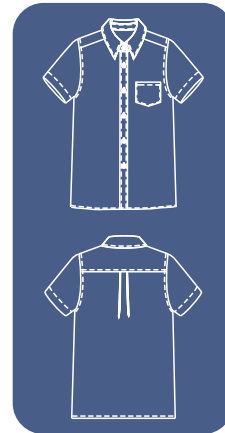
Classic fit men's shirt long sleeve.



FABRIC: Polyester/Cotton - Yarn dye
FEATURES: Long sleeve - classic fit - double yolk - reinforced collar.
COLOURS: Blue and White Stripe, Grey and White Stripe
SIZES: 36, 38, 40, 42, 44, 46, 48, 50, 52, 54

Men's short sleeve Sydney Shirt

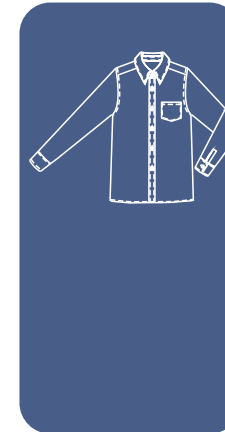
Classic fit men's shirt short sleeve.



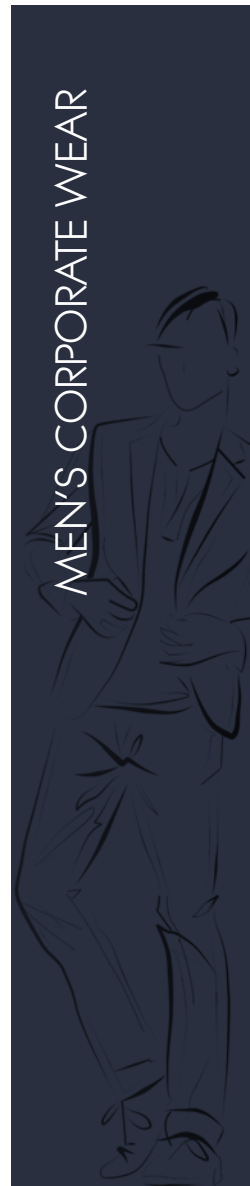
FABRIC: Polyester/Cotton - Yarn-dye
FEATURES: Short sleeve - classic fit - double yolk - reinforced collar.
COLOURS: Black and White Stripe, Blue and White Stripe
SIZES: 36, 38, 40, 42, 44, 46, 48, 50, 52, 54

Men's long sleeve Sydney Shirt

Classic fit men's shirt long sleeve.

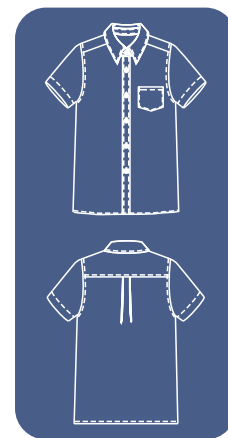


FABRIC: Polyester/Cotton - Yarn-dye
FEATURES: Long sleeve - classic fit - double yolk - reinforced collar.
COLOURS: Black and White Stripe, Blue and White Stripe
SIZES: 36, 38, 40, 42, 44, 46, 48, 50, 52, 54



Men's short sleeve Kingston Shirt

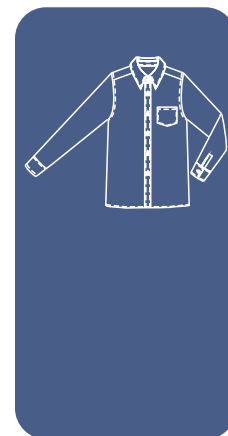
Classic fit men's shirt short sleeve.



FABRIC: Polyester/Cotton - Yarn dye
FEATURES: Short sleeve - classic fit - double yolk - reinforced collar.
COLOURS: Stone Check, Blue Check
SIZES: 36, 38, 40, 42, 44, 46, 48, 50, 52, 54

Men's long sleeve Kingston Shirt

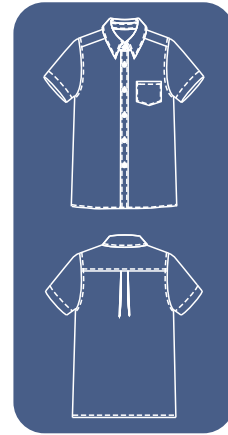
Classic fit men's shirt long sleeve.



FABRIC: Polyester/Cotton - Yarn dye
FEATURES: Long sleeve - classic fit - double yolk - reinforced collar.
COLOURS: Stone Check, Blue Check
SIZES: 36, 38, 40, 42, 44, 46, 48, 50, 52, 54

Men's short sleeve Texas Shirt

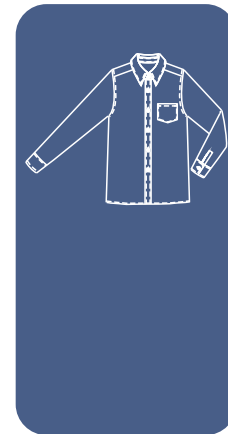
Classic fit men's shirt short sleeve.



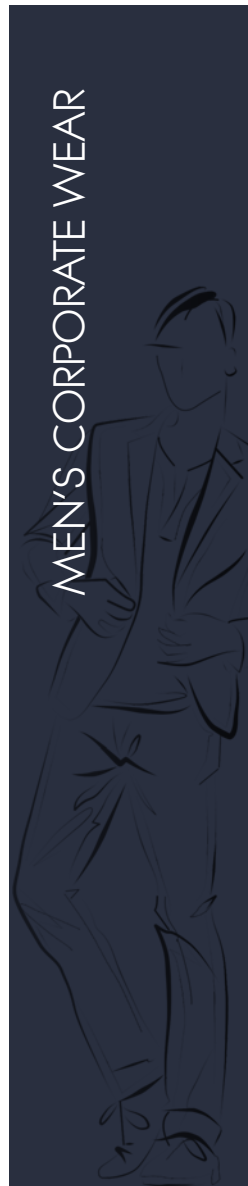
FABRIC: Polyester/Cotton - Yarn dye
FEATURES: Short sleeve - classic fit - double yolk - reinforced collar.
COLOURS: Stone Check, Blue Check
SIZES: 36, 38, 40, 42, 44, 46, 48, 50, 52, 54

Men's long sleeve Texas Shirt

Classic fit men's shirt long sleeve.



FABRIC: Polyester/Cotton - Yarn dye
FEATURES: Long sleeve - classic fit - double yolk - reinforced collar.
COLOURS: Stone Check, Blue Check
SIZES: 36, 38, 40, 42, 44, 46, 48, 50, 52, 54



MEN'S CORPORATE WEAR

Men's short sleeve Pago Shirt

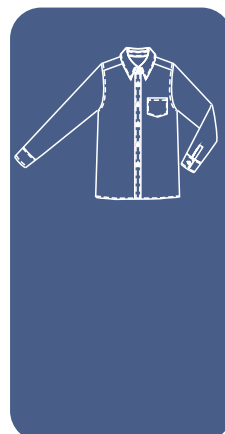
Classic fit men's shirt short sleeve.



- FABRIC:** Polyester/Cotton - Yarndye
- FEATURES:** Short sleeve - classic fit - double yolk - reinforced collar.
- COLOURS:** Blue and White Stripe
- SIZES:** 36, 38, 40, 42, 44, 46, 48, 50, 52, 54

Men's long sleeve Pago Shirt

Classic fit men's shirt long sleeve.



- FABRIC:** Polyester/Cotton - Yarndye
- FEATURES:** Long sleeve - classic fit - double yolk - reinforced collar.
- COLOURS:** Blue and White Stripe
- SIZES:** 36, 38, 40, 42, 44, 46, 48, 50, 52, 54





Doctors Jacket

The Doctors jacket is a unisex top that boasts factuality with its roomy side pockets and handy left breast pocket.



FABRIC: KOOLTRON poly-cotton
FEATURES: Box Pleat at back - Roomy side pockets - Left breast pocket.
COLOURS: White
SIZES: -

Lisa

The Lisa top was inspired by oriental influences and reflects a feeling of calm and relaxation.



FABRIC: Polyester/Viscose
FEATURES: Slits on the sides for ease of movement - piping detail - back darts for feminine fit - wash and wear fabric.
COLOURS: Mid Blue, Navy, Black, White
SIZES: 28, 30, 32, 34, 36, 38, 40, 42, 44, 46, 48, 50, 54

Frieda

The Frieda is a classic medical lab coat. Handy side pockets and a relaxed fit makes it practical and comfortable to wear.



FABRIC: KOOLTROM poly-cotton
FEATURES: Left breast pocket - Roomy side pockets - slits on the sides.
COLOURS: White
SIZES: 32, 34, 36, 38, 40, 42, 44, 46, 48, 50



Sarah

The Sarah top is a princess line top with elegant trims on the collar and sleeves. The princess line provides feminine shape while maintaining a comfortable wear.



FABRIC: Polyester/Viscose
FEATURES: Slits on the sides for ease of movement - trim detail on collar and sleeves - princess line for feminine fit - wash and wear fabric.
COLOURS: White, Navy
SIZES: XS, S, M, L, XL, 2XL, 3XL, 4XL, 5XL

Lillian

The Lillian top is a classy medical/beauty top with zip closure and 4 pockets with flap details.



FABRIC: Polyester/Viscose
FEATURES: Top and side pockets with mock flap details - zip closure princess line for feminine fit - wash and wear fabric.
COLOURS: White
SIZES: 32, 34, 36, 38, 40, 42, 44, 46, 48, 50

Tyra

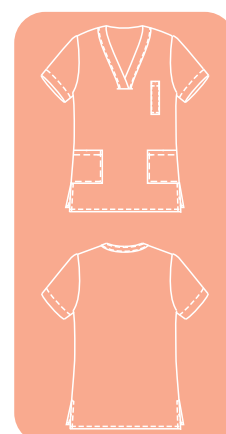
The Tyra is a classy beauty top with it's 3/4 sleeve and body length.



FABRIC: Polyester/Viscose
FEATURES: 3/4 sleeve and body length - zip closure - princess line for feminine fit - wash and wear fabric.
COLOURS: White, Black
SIZES: 30, 32, 34, 36, 38, 40, 42, 44, 46

Scrub

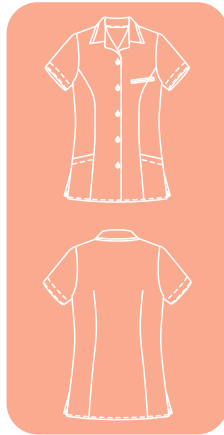
The Scrub is a unisex top that boasts factuality with its roomy side pockets. The contrast trim makes this classic garment come to life.



FABRIC: Polyester/Viscose
FEATURES: V-neck - contrast trim - relaxed fit - wash and wear fabric.
COLOURS: Mid Blue, Navy, Black, White
SIZES: XS, S, M, L, XL, 2XL, 3XL, 4XL, 5XL

Hayley

The Hayley top is a princess line top with elegant piping detail on the collar and pocket. The princess line provides feminine shape while maintaining a comfortable wear.

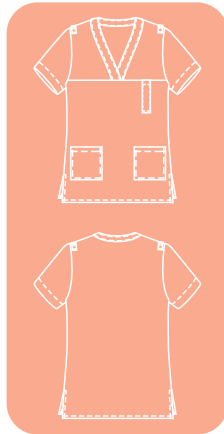


FABRIC: Polyester/Viscose
FEATURES: Slits on the sides for ease of movement - piping detail on collar and pockets - princess line for feminine fit - wash and wear fabric.
COLOURS: Navy
SIZES: XS, S, M, L, XL, 2XL, 3XL, 4XL, 5XL



Samantha

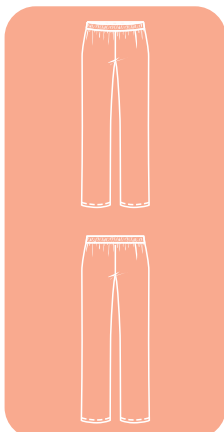
The Samantha top is a loose fitting, roomy side pockets and top left pocket with epaulettes.



FABRIC: Polyester/Viscose
FEATURES: V-neck - slits on the sides - relaxed fit - epaulettes - wash and wear fabric.
COLOURS: Navy
SIZES: XS, S, M, L, XL, 2XL, 3XL, 4XL, 5XL

Kate

The Kate is a classic, loose fitting scrub pants with a full elasticated waist.



FABRIC: Polyester/Viscose
FEATURES: Full elastic waist - relaxed fit - wash and wear fabric.
COLOURS: Navy
SIZES: XS, S, M, L, XL, 2XL, 3XL, 4XL, 5XL

Teresa

The Teresa top is a practical long sleeve medical/laboratory jacket. Piping detail across the chest creates a stylish laboratory coat.



FABRIC: Polyester/Viscose
FEATURES: Long sleeve - zip closure - relaxed fit - wash and wear fabric.
COLOURS: Nip Blue, Navy
SIZES: XS, S, M, L, XL, 2XL, 3XL, 4XL, 5XL





Frequently asked questions

WHAT KIND OF STAFF UNIFORMS DO YOU HAVE?

We have 3 ranges:

- Our corporate range which includes men's and ladies office wear.
- Our service range for specific industries such as hospitals and house keeping.
- Casual wear range suitable for team building and sports days.

IS THERE A MINIMUM FOR ORDERS?

A minimum of 5 corporate uniforms consisting of a minimum of 3 garments each is required.

WHAT CONTINUITY DO YOU OFFER?

We are committed to ensuring the styles, fabrics and colours in our catalogue will continue to be available as shown. However, since we continue to develop and update our ranges, we do reserve the right to withdraw/replace existing fabrics, styles, colours and designs. ALL GARMENTS ARE MADE TO ORDER, so please note that colour variations may occur due to differences in fabric batches from different deliveries.

HOW LONG IS DELIVERY AND HOW ARE MY GARMENTS DELIVERED?

Delivery is normally 4-6 weeks from our confirmation of your order. The same applies to reorders, unless otherwise advised. Delivery Options Include:

1. Using your own courier.
2. Using SKC Corporate Images courier - delivery is charged per box.
3. Your own arrangement to collect the goods - no delivery will be charged.
4. By Post - add delivery charge.

WHAT GUARANTEE DO I HAVE ON MY GARMENTS? CAN I RETURN FAULTY GOODS?

Should there be a factory fault, the goods must be returned to us within 7 days. We will assess the claim and if it is found to be valid, it will be repaired or replaced as soon as possible, free of charge.

DO YOU CARRY OUT ALTERATIONS?

Our garments are manufactured to international sizing standards. The fitting range is fitted on your premises to ensure that the staff are comfortable with the size they are ordering.

HOW DO I ORDER?

- Using our interactive website
- Contact our sales team on 0861 373 772 for the documents.



corporate images

Telefax: 0861 373 772

PO Box 40495

Moreleta Park

0044

sales@skccorporateimages.co.za

www.skccorporateimages.co.za

